

## Lingcod Egg Mass Survey Examples

- Below is a male (P) lingcod guarding a new (N) egg mass - cantaloupe (C) sized, not the biggest but not the smallest. They resemble a block of Styrofoam! Considered 'loose' (L) because it's not the most secure in that tire, a strong current could easily come and sweep it away, but it's not entirely exposed.

### Dive slate example\*:

EGG MASS #	DEPTH in feet	SIZE	CONDITION	SITUATION	GUARDING MALE
1	18 ft	C	N	L	P

*\*See appendix for legend.*



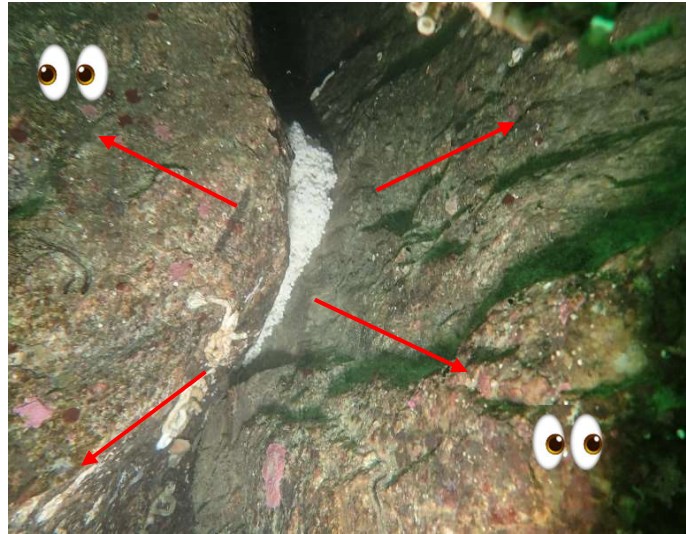
- You may encounter egg masses out in the open. This egg mass could easily be swept away with a current. It is considered new due to its white colour.

EGG MASS #	DEPTH in feet	SIZE	CONDITION	SITUATION	GUARDING MALE
2	19 ft	C	N	O	A



3. This egg mass is the product of a very smart female lingcod! This watermelon sized egg mass is nestled very securely in between two rocks – there’s no chance of it budging. There was no lingcod present when this egg mass was spotted. Lingcod do not travel far, so it is safe to assume this one is abandoned/the male is absent. *However, it’s always smart to check around the corner if there isn’t a lingcod lurking elsewhere!*

EGG MASS #	DEPTH in feet	SIZE	CONDITION	SITUATION	GUARDING MALE
3	22 ft	W	N	S	A



4. An egg mass this large is watermelon sized. This lingcod is guarding his egg mass right above it. Sometimes the lingcod can be located a few meters away from its egg mass. *Males can also guard two egg masses right next to each other or a couple feet apart (see nests 6 and 7).*

EGG MASS #	DEPTH in feet	SIZE	CONDITION	SITUATION	GUARDING MALE
4	20 ft	W	N	S	P



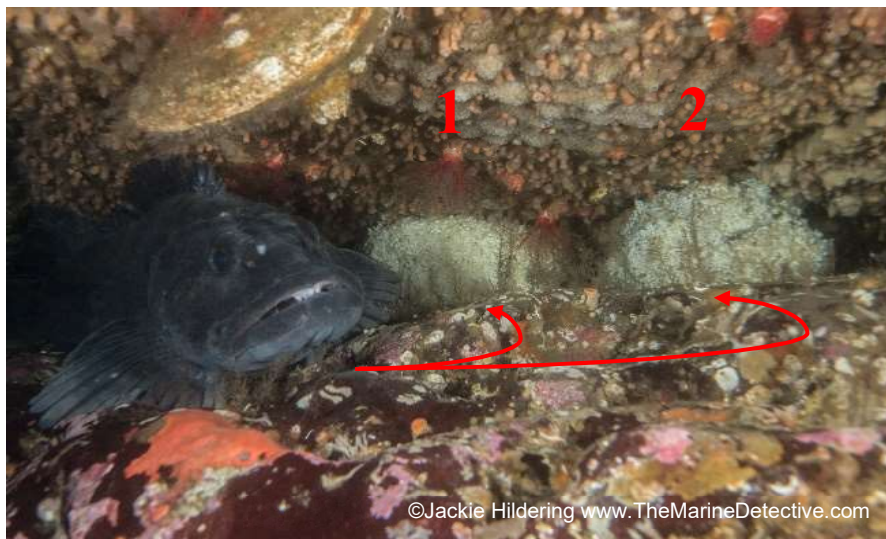
5. On the smaller side (grapefruit), this egg mass is precariously laid in between rocks. While it is not entirely out in the open, it is not entirely secure. Loose would be the best descriptor.

EGG MASS #	DEPTH in feet	SIZE	CONDITION	SITUATION	GUARDING MALE
5	21 ft	G	N	L	A



6 & 7. This male lingcod is seen guarding two separate egg masses in a secure location. *If you see one male guarding two egg masses, please label them as two separate nest numbers and label the guarding male as P2 in both.*

EGG MASS #	DEPTH in feet	SIZE	CONDITION	SITUATION	GUARDING MALE
6	18 ft	C	N	S	P2
7	18 ft	C	N	S	P2





## Appendix

- **Size** – Estimate if the egg mass is roughly the size of a watermelon (W), cantaloupe (C) or grapefruit (G).
  - **Condition** – Recently extruded eggs will generally be white/pink (N). Older eggs will be eyed/dark gray (E), or rotten (R).
  - **Situation** – Note how the egg mass is situated, either loose (L) in a crevice, or secure (S) in a crevice, or loose open (O).
- male –** Often one may guard than one mass. If male is guarding one egg indicate so “P”. If the guarding multiple masses, indicate so with “P2”. If there is an egg mass without a guarding male, indicate the absence of the male with an “A”.
- | SIZE              | CONDITION             | SITUATION     | GUARDING MALE                                       |
|-------------------|-----------------------|---------------|---|
| (W)<br>Watermelon | (N)<br>New            | (S)<br>Secure | (A)<br>Absent                                       |
| (C)<br>Cantaloupe | (E)<br>Eyed/Dark Gray | (L)<br>Loose  | (P)<br>Male present                                 |
| (G)<br>Grapefruit | (R)<br>Rotten         | (O)<br>Open   | (P2)<br>Male present - guarding multiple egg masses |